



Independent
Evaluation Office
GLOBAL ENVIRONMENT FACILITY

Comprehensive Evaluation of the GEF Topics, Approaches and Methodological Innovations

Juha I. Uitto
Independent Evaluation Office
Global Environment Facility
UNEG Webinar, November 8, 2016

Outline

- 1) About the GEF and the Comprehensive Evaluation**
- 2) Approaches and methodologies**
- 3) Geospatial analysis and value for money**
- 4) Findings from International Waters program study**
- 5) GEF engagement with the private sector**
- 6) Knowledge management and partnerships**

SECTION I

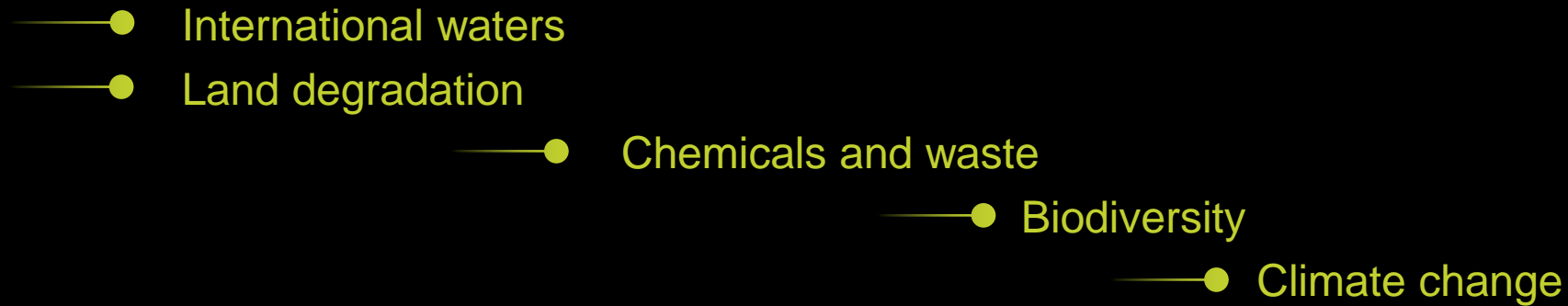
GEF and the 6th Comprehensive Evaluation (OPS6)

The GEF and the Comprehensive Evaluation

- Provide evaluative evidence to inform the negotiations for the seventh replenishment of the GEF
- Assess the extent to which the GEF is achieving its objectives
- Assess the relevance of the GEF in the changing landscape of environmental finance
- Two main streams:
 - Relevance and the global contribution of the GEF
 - Program performance and impact

October November December January February March April May June July

Focal Area Studies

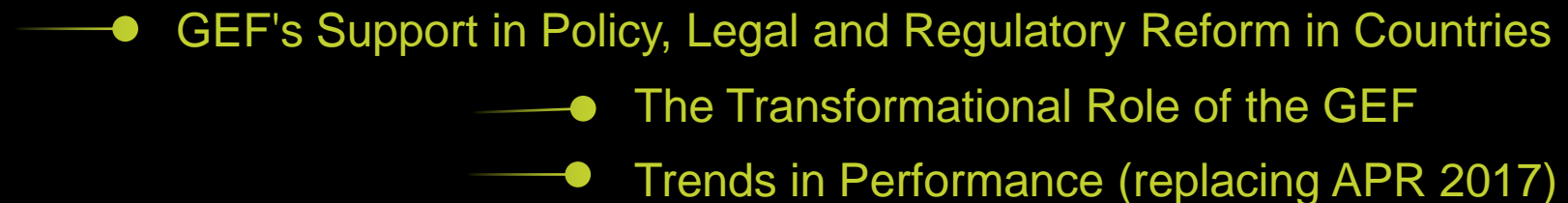


Mainstreaming / Cross cutting

< CSO Network (June)



Impacts



Institutional Issues

- Reform Process – Results Based Management
 - Reform Process – Knowledge Management
 - GEF6 Strategy, Global Relevance
 - Governance, Financing, Health of the Partnership

Thematic Evaluations

- Programmatic approaches
- Multiple Benefits of GEF support
 - Integrated approaches

OPS6

- Early findings

Full report >
(September)

Site visits to all regions

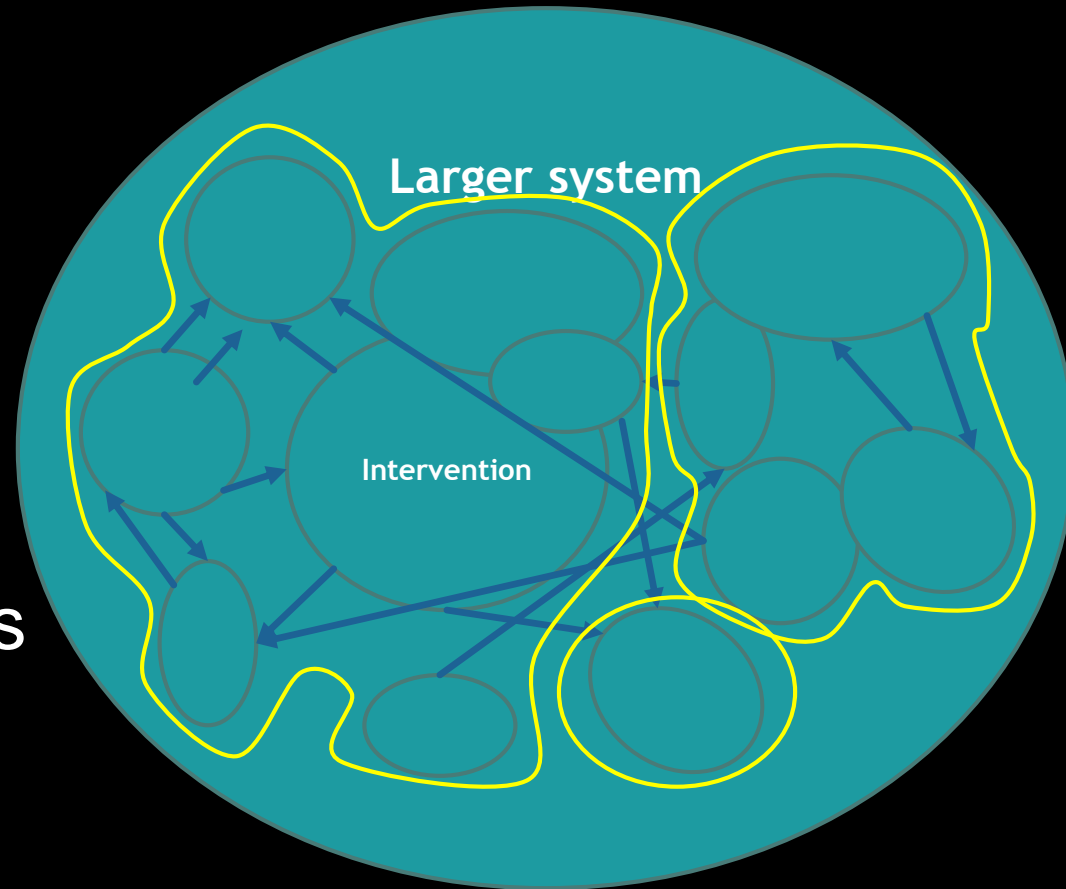


SECTION II

Approaches and Methodologies

Systems Perspective: Elements We Need to Understand

- Boundaries
- Components
- Interactions
- Emergent properties

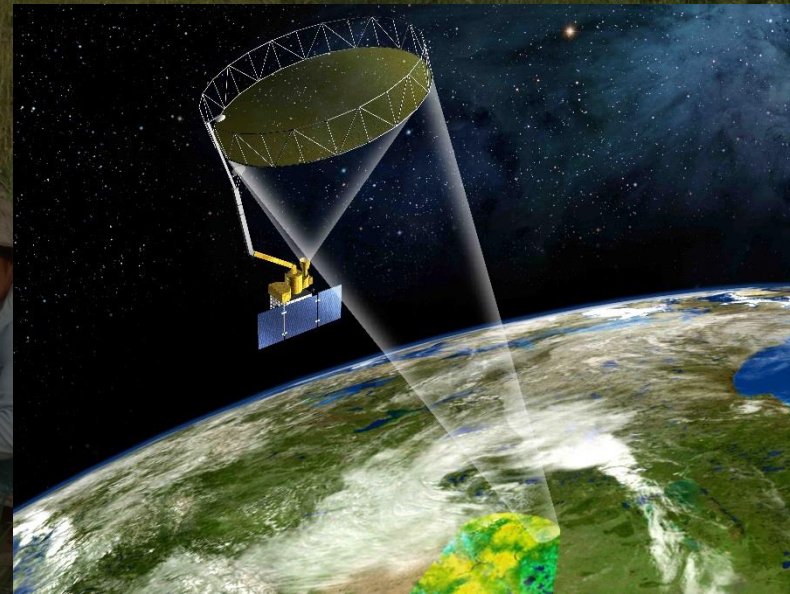


Novel evaluation methods

Rapid Impact
Evaluation



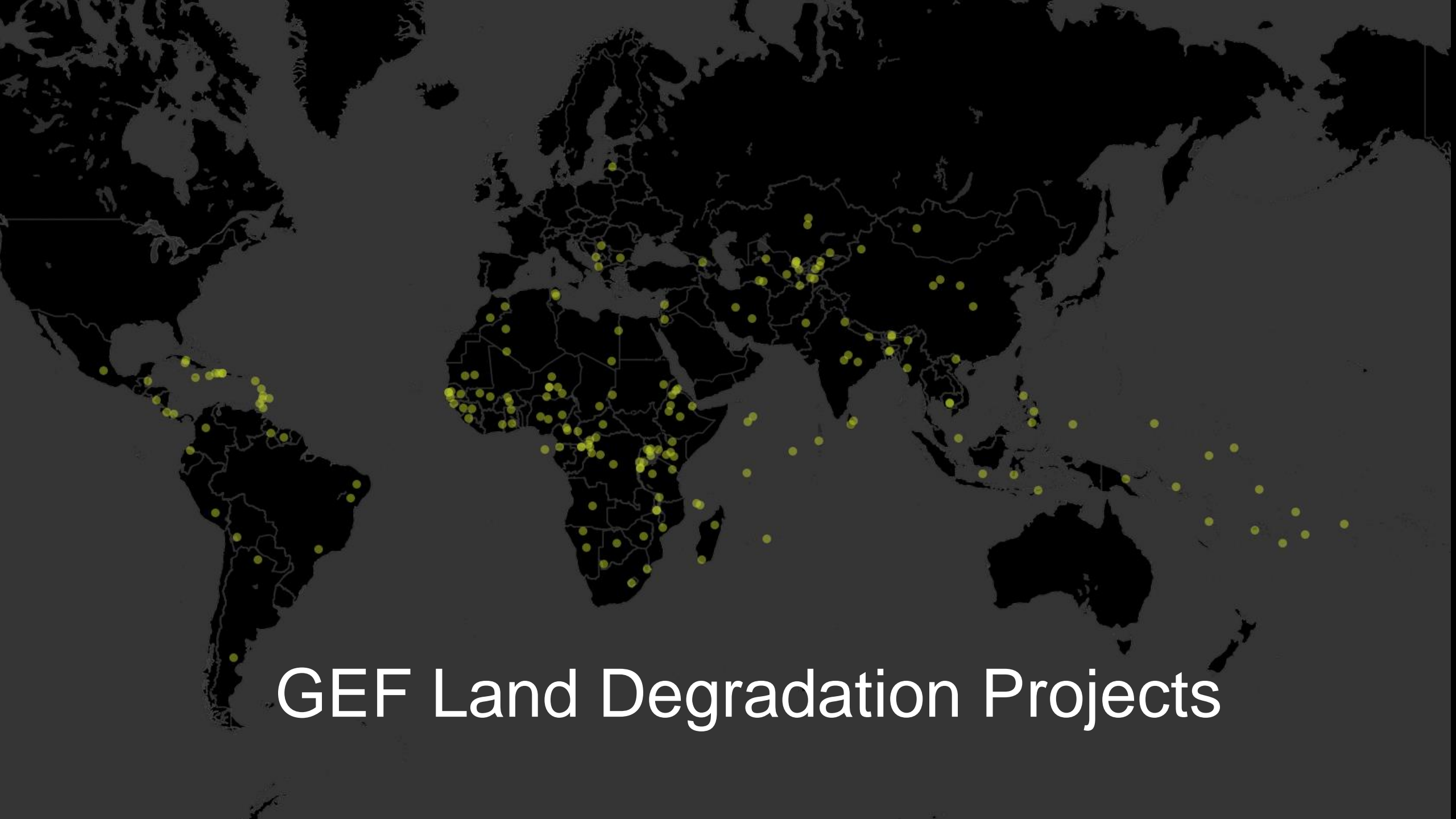
Geospatial and
quantitative methods





SECTION III

Geospatial Tools and Value for Money Analysis of GEF Land Degradation Projects



GEF Land Degradation Projects



1. Location

2. Satellite

3. Data integration

5. Carbon sequestration

4. Causal trees

Methodology

Findings about location



Positive
increase in
Vegetation



25 km of
protected area



Low density



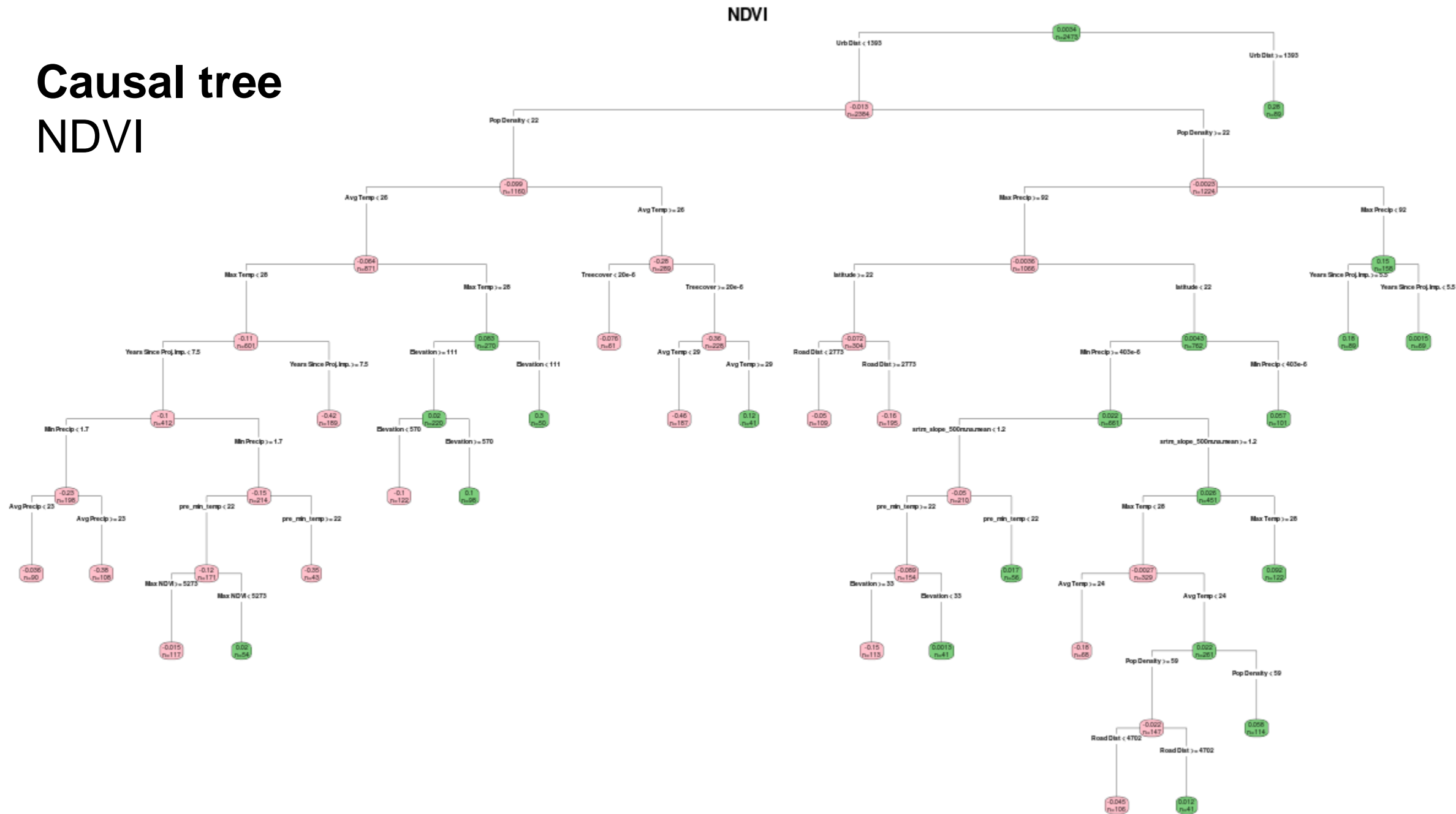
Variable
characteristics

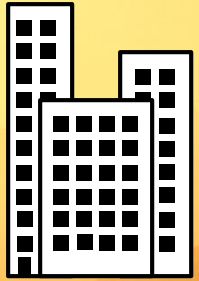


Some without
forest cover

Causal tree

NDVI





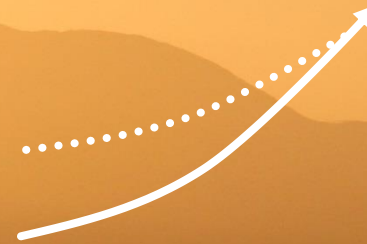
Less effective
near urban
areas



Time
required



Multifocal



Initial
conditions



Environmental
and Economic
characteristics

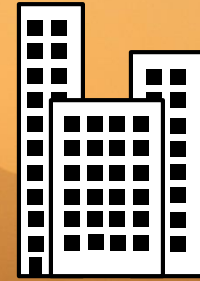
Findings: Vegetation



4.5 years after

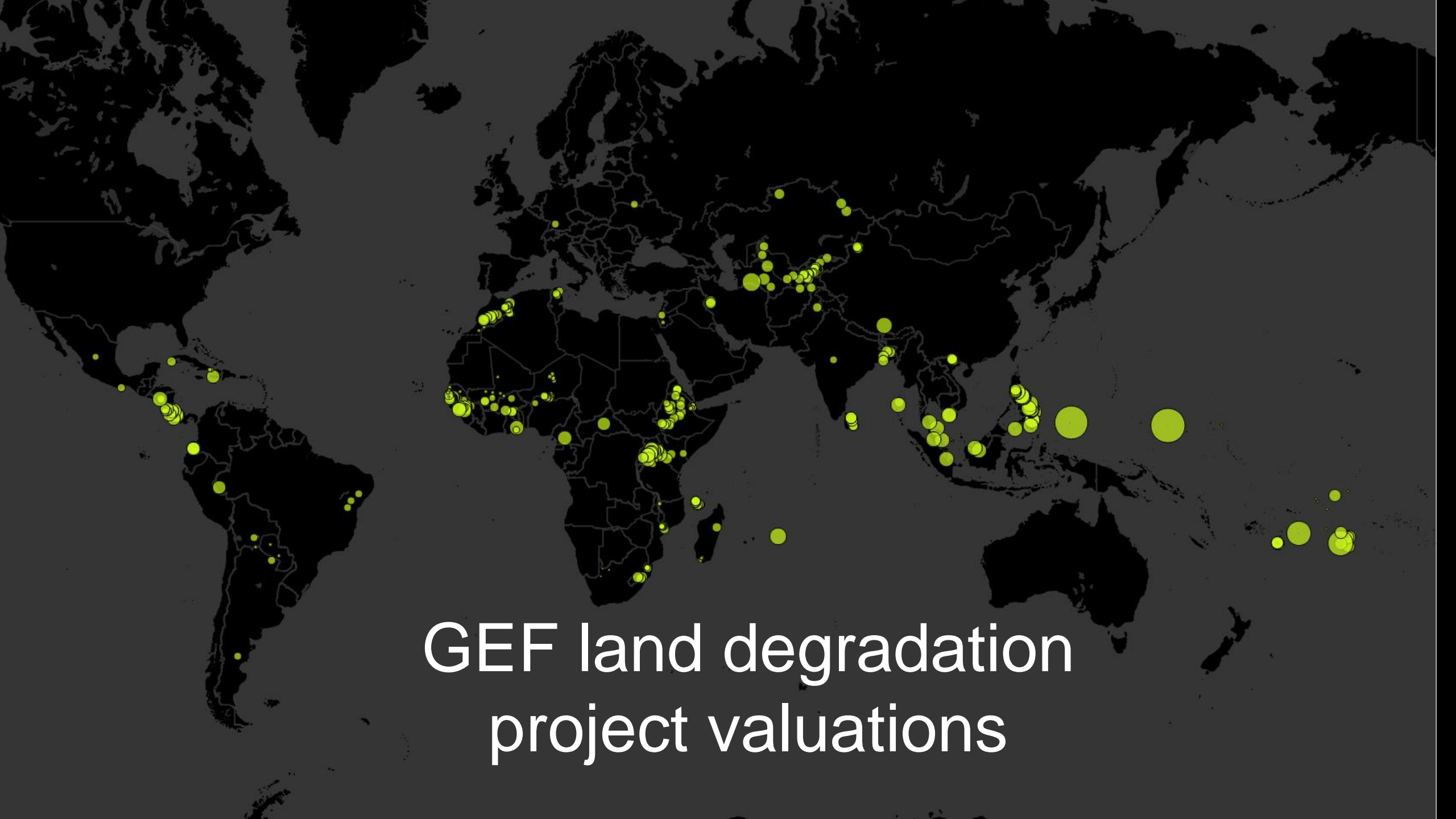


Population
density



More effective
near urban
areas

Findings: Forest cover



GEF land degradation
project valuations

The background of the slide is a photograph of a rural landscape at sunrise. In the foreground, there is a dark, silhouetted field. In the middle ground, a farm with several buildings and a water tower is visible, partially obscured by a layer of mist or low-lying clouds. In the background, a range of mountains is silhouetted against the bright, orange-hued sky of the rising sun. Three large, semi-transparent white circles are overlaid on the upper half of the image, each containing a large number and a descriptive text block below it.

43.52

tons of carbon sequestered
per hectare


108,800

tons of carbon sequestered
per project location

\$7,500,000

contributed to sequestration alone

Findings



Use a learning-based approach
as an initial screening tool for
project planning

Collect the exact geographic information
of GEF land degradation activities on an
ongoing basis

Use and Utility

A small, dark wooden boat with a person inside is visible in the lower right corner of the image. The person is wearing a blue shirt and is looking towards the left. The boat is on a calm body of water with gentle ripples. The background is a vast expanse of blue water under a clear sky.

SECTION IV

International Waters Focal Area Study

296

projects

\$1.68 billion

In grant funding

\$10.38 billion

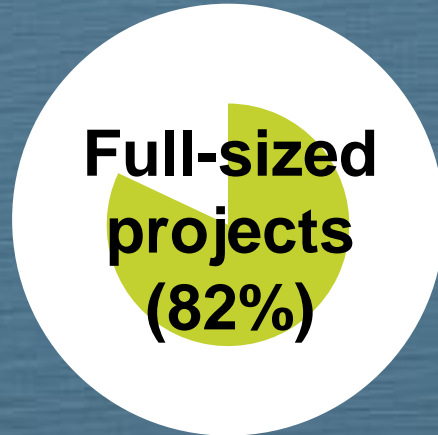
via co-financing

Portfolio



THE MOST COMMON...

Project modality



Agency



Region

**Africa
(26%)**

Findings



Goal

Stress reduction  **62%**

Foundational  **21%**

Theme

Fisheries  **22%**

Water body

Large marine ecosystems  **46%**

Findings



**High level of
contemporary
relevance**

Regional security
Transboundary waters
Responsive to evolving context

Findings





TRANSFORMING OUR
WORLD:
THE 2030 AGENDA FOR
SUSTAINABLE
DEVELOPMENT

1 NO
POVERTY



2 ZERO
HUNGER



3 GOOD HEALTH
AND WELL-BEING



4 QUALITY
EDUCATION



5 GENDER
EQUALITY



6 CLEAN WATER
AND SANITATION



7 AFFORDABLE AND
CLEAN ENERGY



8 DECENT WORK AND
ECONOMIC GROWTH



9 INDUSTRY, INNOVATION
AND INFRASTRUCTURE



10 REDUCED
INEQUALITIES



11 SUSTAINABLE CITIES
AND COMMUNITIES



12 RESPONSIBLE
CONSUMPTION
AND PRODUCTION



13 CLIMATE
ACTION



14 LIFE
BELOW WATER



15 LIFE
ON LAND



16 PEACE, JUSTICE
AND STRONG
INSTITUTIONS



17 PARTNERSHIPS
FOR THE GOALS



**Largely satisfactory
performance**



of completed projects have outcome ratings
in satisfactory range



of projects received ratings of moderately
likely or above for sustainability of outcomes

Findings



Contributions



Rehabilitation of the Black Sea
Northwest Shelf dead zone



Support the process leading to the
Stockholm and Minamata Conventions



Adoption of the Ballast Water Convention on
Alien Species, the Pacific Tuna Treaty, the
Guarani Aquifer Agreement



Establishment of the Benguela
Current Commission

Effectiveness



**A collective response
to international
water law**

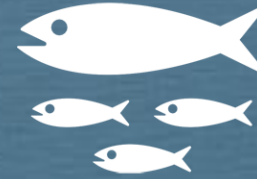
**A catalyst for
integration**

Findings





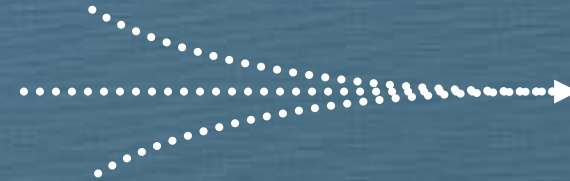
**Decline of the
funding envelope**



**Dominance of marine
and ocean investments**



**No funding for project
or program preparation**



**Lack of Agency participation
in strategy definition**

Areas of concern



Lake Victoria: Vegetation presence



2000

2003

2005

2007

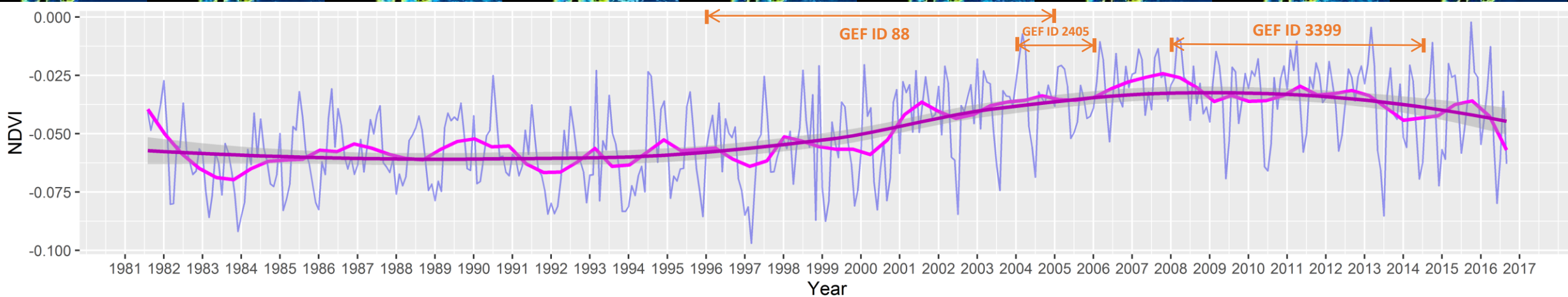
2009

2011

2013

2015

2016





SECTION V

GEF Engagement with the Private Sector

The environment is an important concern for the private sector



80%

cite it as an integral part
of their business strategy



90%

expect to invest more in the
development of environmental
products and services in the
coming five years



**The GEF can add the most value in removing
barriers for mainstream capital**

**Direct investments
or grants**

**Risk-sharing
mechanisms**

The GEF should prioritize its focus areas to optimize additionality



climate change



forest management



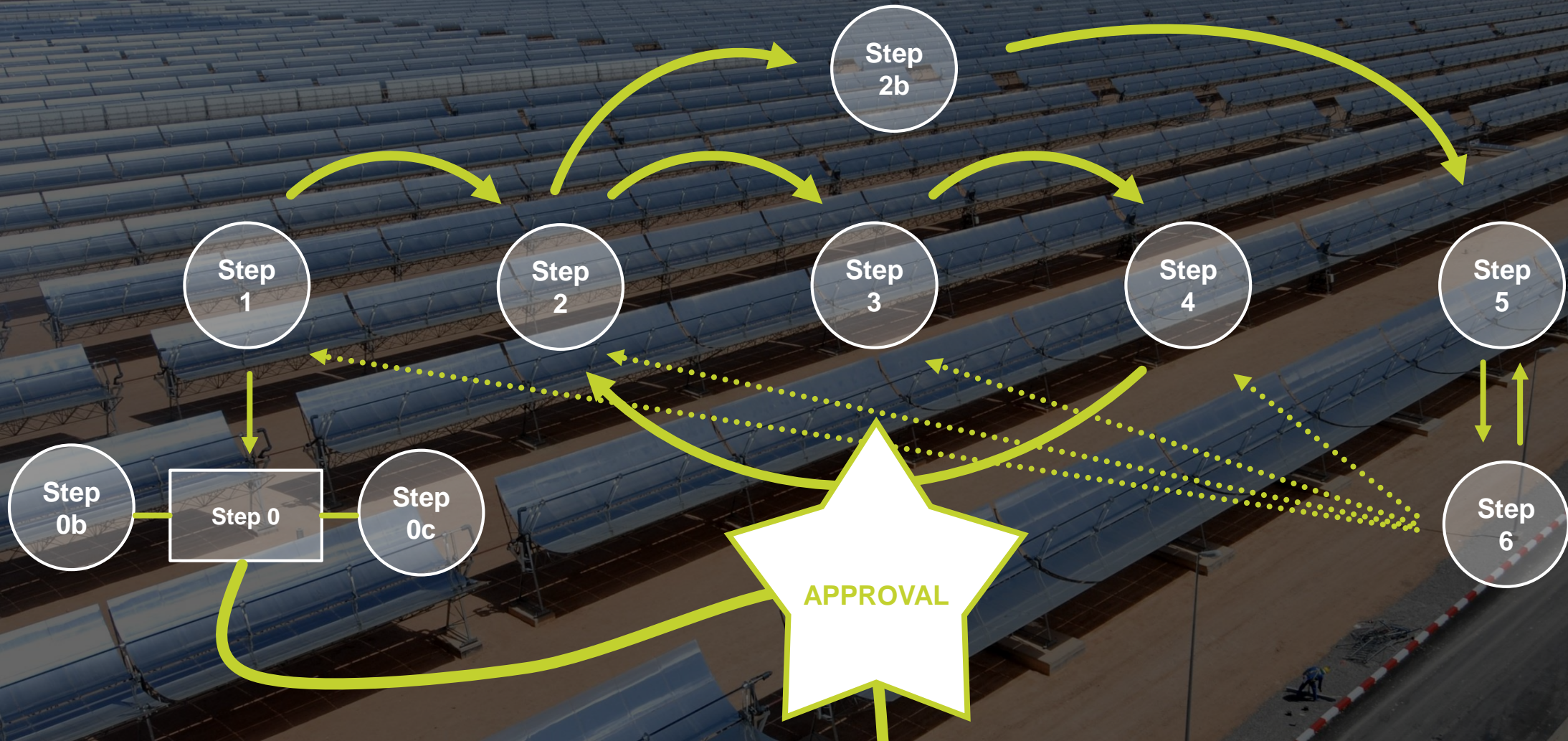
reduction of
harmful chemicals

The GEF should support innovative financial instruments and policy change

GEF

**Private
sector**

More efficient operations are needed for the GEF to be a credible private sector partner





Independent
Evaluation Office
GLOBAL ENVIRONMENT FACILITY

SECTION VI

Knowledge Management and Partnerships

Knowledge sharing and capacity development



Convention on
Biological Diversity

Expanded Constituency
Workshops



INECC
INSTITUTO NACIONAL
DE ECOLOGÍA
Y CAMBIO CLIMÁTICO

Partners



Data & Maps

Take a tour of the latest GEF performance ratings in our new data visualization feature. This information came from the latest Annual Performance Report in 2015.

What's New

EVALUATION

Program
Evaluation of the
Special Climate
Change Fund...

EVALUATION

GEF Civil Society
Organization
(CSO) Network
Evaluation

EVALUATION

Evaluation of the
Programmatic
Approaches in
the GEF

EVALUATION

Evaluation of
Multiple Benefits
of GEF Support

OPS PERIOD

OPS 6

EVENT

GEF Council
Meeting #51

Upcoming Opportunities for Collaboration

- Evaluation of Integrated Approaches: (i) Food security; (ii) Sustainable agricultural commodities; (iii) Sustainable cities; (iv) Wildlife trade; (v) Fisheries; (vi) Amazon
- Transformational engagements of the GEF
- OPS6 in general